

A World-Class Transportation Network

Located at the crossroads of Europe, companies based in Paris Region can easily access a market of 500+ million customers and all major European cities. The Region is easy to access with 3 international airports and 7 TGV (high-speed train) stations.

As the Region prepares to host the 2024 Olympic Games, several large public infrastructure projects are currently in development and will be constructed by 2030, including the Grand Paris Express.



Railway bridge over the Oise © Pierre-Yves Brunaud - L'Institut Paris Region

A Gateway to Europe and the World

By plane*

Paris Aéroport, ACI, 2019/2020

- **3** international airports
- **295,333** aircraft voyages
- **165** airlines
- **119** countries and **328** destinations reachable from Paris

33.1M
passengers

3.7M
connecting passengers

Paris-Charles de Gaulle (CDG)

- **#2** in Europe for passenger traffic
- **22.3 million** passengers
- **212,309** aircraft voyages
- **328** destinations

Paris-Orly

- **10.8 million** passengers
- **83,024** aircraft voyages
- **128** destinations

Paris-Le Bourget

Europe's leading business airport

- **54,646** aircraft voyages
- **800** destinations

10 airfields and **1** heliport

*Note: 2020 figures: Impact of the COVID pandemic

By train

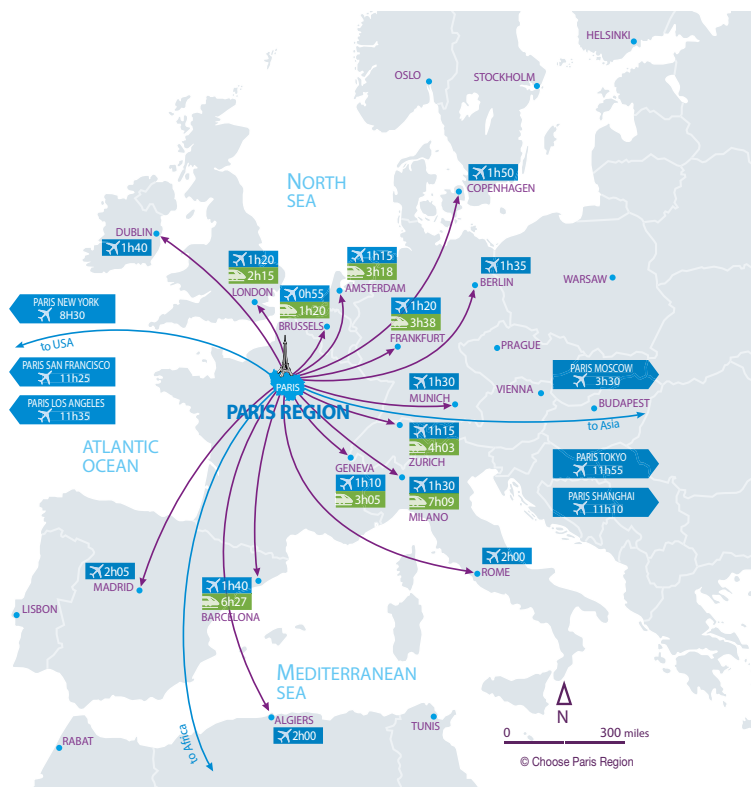
SNCF 2021, Arafer, 2017 and Ile-de-France Mobilités

10
main stations including

7
TGV (high-speed train) stations

- **5 million** passengers on trains in France per day, including
- **3.5 million** in Paris Region (**70%** of French Traffic).
- **15,000** trains per day in France, **40%** of which are in Paris Region
- **5** railway stations have traffic that exceeds **100,000** travellers daily
- Gare du Nord, **#1** busiest European station
- **19 million** TGV passengers travelling from Paris to other major European destinations
- **4,700 km** of railway tracks, including **636 km** of LGV (High Speed Line)

Paris Region, Connected to Europe and the World



A Vast, Multimodal Regional Transport Network

Public transport, bicycles, electric scooters and scooters, self-service vehicles, autonomous cars, buses and automatic metros: the local transportation system is divided up thanks to a very diverse offer which is constantly expanding.

Type of trips	Number of trips / weekday (in million)	Evolution in 2018 (Oct. 2020) (in %)
Walking	16.2	- 4
Car	12.0	- 19
Public transport	6.8	- 28
Bike	1.0	+ 25
Motorized two-wheeled vehicles	0.6	+ 40
Others	0.2	- 11
Total	37	- 13

Ile-de-France Mobilités (09-10/2020)

3.1 billion trips by public transport in Paris Region		
Mode of traffic	Lines	Trips (in billions)
Subway	16	1.1
Train – RER*	14	1.1
Streetcars	10	0.2
Bus/night buses	1,510	0.9
Total	1,550	3.1

Ile-de-France Mobilités (09-10/2020)

*High-speed metro

A Wide Public Transportation Network, Extended Further by the Grand Paris Express

The largest urban development project in Europe providing a new transport network. Heavy investments in modernizing and expanding the public transport network.

- **200 km** of additional automated metro lines
 - **68** new stations
 - **2 million** passengers everyday
 - **€35B** invested through 2030
- The project is set to link Paris Region's **3** airports as well as business districts and scientific clusters.
- In total, approximately **1 million m²** of floor space will be developed by Société du Grand Paris on the land acquired for the construction of the Grand Paris Express.
 - **340,000 m²** of commercial space
 - Over **7,000** residential projects

Mass Transit in Paris Region

A very competitive monthly public transport subscription, at **€75.20** in 2021

Ile-de-France Mobilités, 2020

The rail system in Paris Region carries over **2 billion** passengers annually.

- Paris Region's mass transit network, **#3** in the world behind Tokyo and Seoul, and ahead of Shanghai, London, and New York.
- **23,000** trains, RERs, subways, and trams
- **900** stations and stops
- **1,800 km** of lines
- **1 metro every 85 seconds** on line 14
- **1 train every 2 minutes** on the RER C during rush hour
- The **30 billion kilometers traveled annually by Paris** Region's inhabitants thanks to the mass transit network, represent **a CO2 emission saving of 4 million tons per year**.
- The network is being renovated and is growing: **2.5-fold increase** between 2015 and 2020
- Nearly **1,500** clean buses (electric or gas) in circulation in the network by 2022, more than **5,000** by 2025

Ile-de-France Mobilités, 2020

Shared Transport for Alternative Mobility

Walking remains the primary mode of travel for Paris Region's inhabitants followed by car and public transport.

Two other modes of transport have seen their use increase: bicycles and other two-wheeled vehicles.

A growing offer with innovative and green alternative transport solutions to get around without polluting the environment.

Self-Service and Free-Floating Bikes, Cars, and Mopeds

- **850,000** trips per day
- **+30%** since 2010.
- **40%** of trips during the week are to go to work.

Velib Metropole, Self-Service Bicycle System

- **20,000** bikes:
35% of which are electric power-assisted bicycles,
70% of which are traditional bicycles,
- **1,400** stations in
55 municipalities
- **400,000** subscribers
- **5.5 million** trips in september 2020
- **215,000** journeys (record for a single day)

Véligo Location, a Long-Term Rental Service (6 to 9 months) of Electrically Assisted Bikes

- **10,000 Véligo** Location bikes

Free-Floating Bike Scooter and Moped Operators

- E-bikes: around 6,000
- E-Mopeds: around 6,000
- E-Scooters: 15,000
- 1.450 shared electric cars

Free-Floating cars

- Carsharing (car clubs)
- Carsharing peer to peer

L'institut Paris Region, Ile-de-France Mobilités,
Velib Metropole

The Grand Paris Express Urban Sites

With the Grand Paris Express and the 200 kilometers of new lines being built, new areas will emerge with good transport connectivity and with more affordable land and real estate prices.

